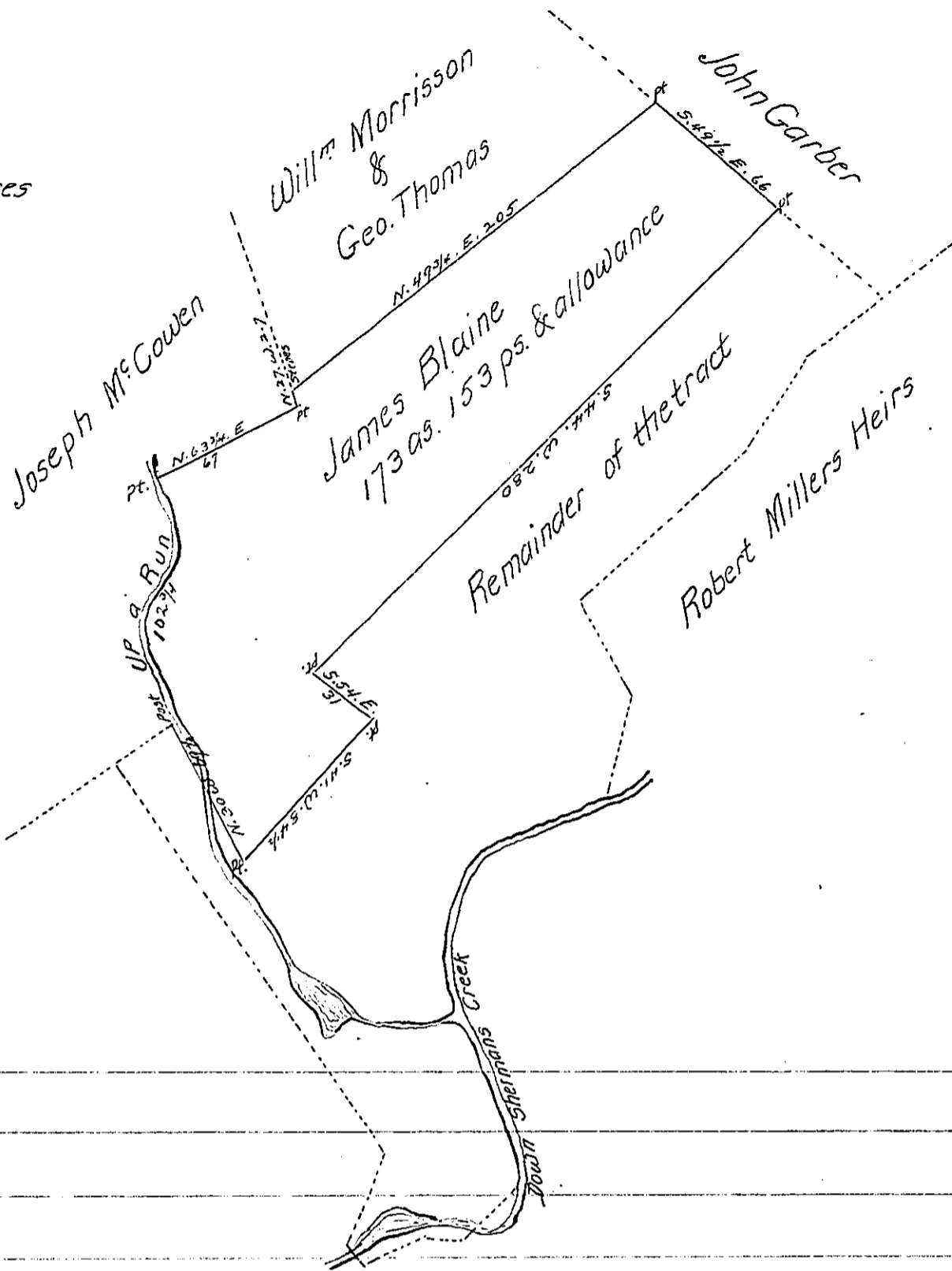


Courses & distances
up a Run.

N. 20 3/4. W. 34 1/4
 N. 8 1/2. E. 12
 N. 14. W. 6
 N. 42 1/2 E. 19
 N. 13. W. 20
 N. 7. W. 17 1/2

 102 3/4



A Draught of a Tract of Land Situate in Tyboine Township
 Cumberland County Containing 173 as. 153 ps. & allowance of six p Cent
 for Roads &c. It being part of a larger tract of *425 as. 125 ps. & allow-
 ance Surveyed the 28th day of June 1810. In pursuance of a warrant granted
 to James Blaine Dated the 20th day of August 1765.

Wm. Wheeler D.S.

To Andrew Porter Esqr.

S.G

* part 445 as. 125 ps.

223
 160

 63

IN TESTIMONY that the above is a copy of the original remaining on file in
 the Department of Internal Affairs of Pennsylvania, made
 conformably to an Act of Assembly approved the 16th day of
 February, 1833, I have hereunto set my Hand and caused
 the Seal of said Department to be affixed at Harrisburg,
 this second day of February 1904

Francis P. Brown
 Secretary of Internal Affairs.